

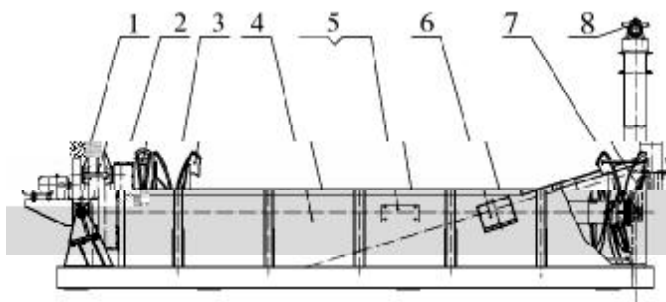
FG9FC : ; < = > ?
2FG92FC @ ; < = > ?

) * + , -

+ , > ? # @ A B C D E F G H I J K
L E F G H K L H M N O P Q > ? R S T C
D U H V W K X Y Z X . R [\] ^ # _ `
a b I J c

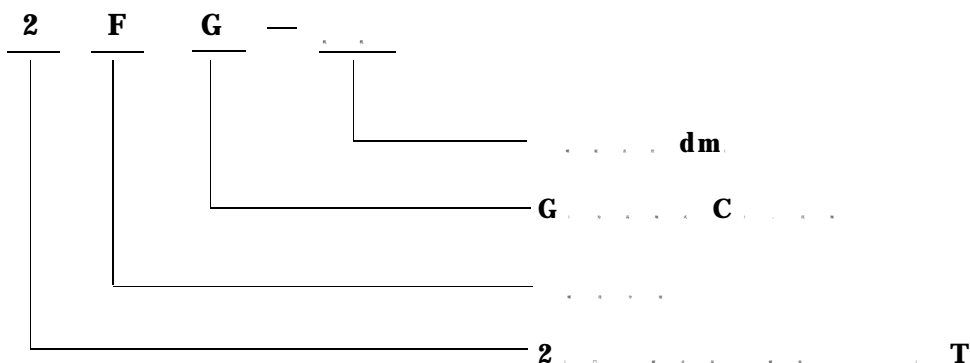


. / 0 1 -



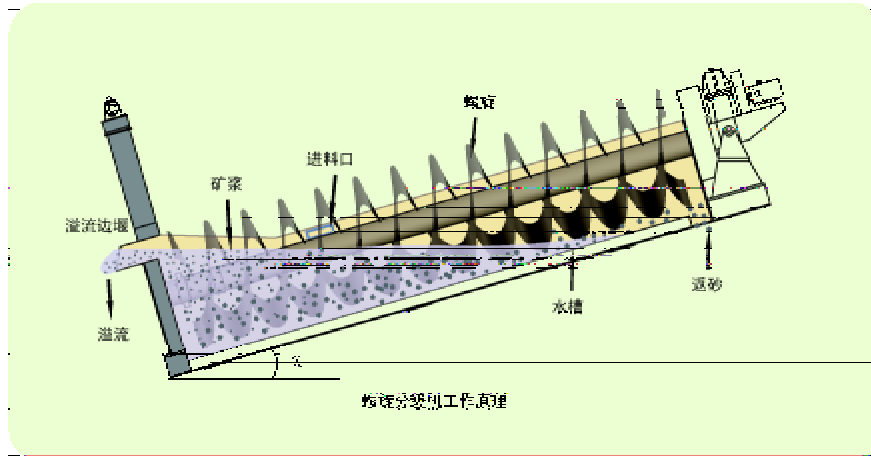
! " # \$ % & ' () * + , - . / 0 1 2 3 4 5 6 7 8 9 : ; < & ' 4 =

2 3 4 5 6 # \$ 7 8 :



L & MN-

> ? # def Dghi Pj kl mZ nol mRpqr shKt uvwQl mt xy N
 O > ? t Rz ^ { t HM | } Du v ~ K 9 t N 5 6 • . / R ! " # 4 t . / 8 \$ d HM >
 ? uv ~ R + , % w & " RLHM' () VCR * + z i P , - . / OR 1 . 2 I 3 4 2 5 R
 N 8 6 7 8 9 R : o i P ; u v . / h < 9 R = + , > ? . @ 5 6 V ABC @ 5 c D [+ ,
 > ? # \ ^ # _ ` a b RE : CBF ^ # G ^ c



OH# \$ P Q-

1 ZH" I J KL

M 1 N ! " H" L O" # + P w Q + j R S + k R S

M 2 N & ' H" L O" # + k R S + j R S

2 Z : ; I J L

TUV = WXYZ [\ Y] ^ ` { _ ` q ` RTUV / 8 a \$ _ K V b R / \$: cr T & t
 def Vgh R 8 \$: cr 8 9 : i K cdef Vg : i aj t Vg : cr ! " k / R l T *
 + , V V , & m " R n T V ' v m " c 8 \$ t V c : ci = D \ o p q r r H M K R p s t u
 v w t x y 4 = R z C { | } J ~ • ! " # \$ x y f J R | q % & { x y ' (R) \ { V c
 t * C * + c

: 9 @ ; < = > ? R S # \$ T U V

20	O 1	+, 34 (mm)	./ Q (mm)	+, &w (rpm)	56 (7Mt/dN		O" 89MkwN		; f < = M \ > ? > • N
					BC :	2 I :	! "	&'	
• 4 J + , > ? #	FG10	1000	6500	3.5- 7.6	473- 1026	85	5.5	@"	7590x1240x2380
	FG12	1200	6500	5- 6.8	1170- 1600	155	5.5	1.5	8180x1570x3110
	FG15	1500	8400	2.5- 6	1140- 2740	235	7.5	2.2	10410x1880x4080
	FG20	2000	8400	3.6- 5.5	3890- 5940	400	11/15	2.8	10790x2530x4490
	FG24	2400	9210	3.6	6800	580	15	3.0	11650x2910x4970
	FG30	3000	12500	3.2	11650	890	22	4	12500x320x5340
	2FG12	1200	6500	5- 6.8	3200	310	2x5.5	2x1.5	8230x2790x3110
	2FG15	1500	8400	3.5- 6	2280- 5480	470	2x7.5	2x1.5	10410x3390x4080
	2FG20	2000	8400	3.6- 5.5	7780- 11880	800	2x11	2x2.8	11000x4600x4490
	2FG24	2400	9210	3.6	13600	1160	2x15	2x3	12710x5430x5690
2FG30	3000	12500	3.2	23300	1785	2x22	2x4	16020x6640x6350	
u A J > ? #	FC12	1200	8400	5- 7	1170- 1870	120	7.5	2.2	10370x2790x3920
	FC15	1500	10500	2.5- 6	1140- 2740	185	7.5	2.2	12670x1820x4890
	FC20	2000	12900	3.6- 5.5	3895- 5940	320	15	2.8	15610x2530x4490
	FC24	2400	14200	3.6	4650- 7450	455	18.5	4	16580x2930x7190
	2FC15	1500	10500	2.5- 6	6800	370	2x7.5	2x1.5	12670x3370x4890
	2FC20	2000	12900	3.6- 5.5	6480- 11800	640	2x11	2x3	15760x4600x5640
	2FC24	2400	14200	3.67	13700	910	2x18.5	2x4	17710x5430x8000
	2FC30	3000	14300	3.2	23300	1400	2x30	2x4	17824x6640x8860

(, - . /)