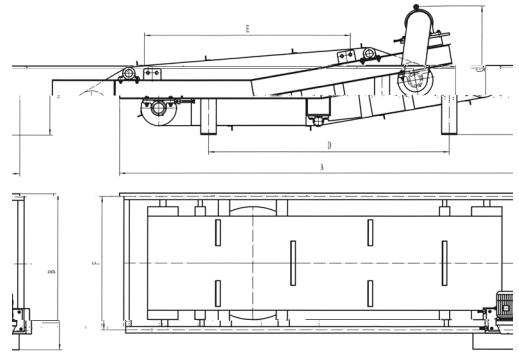


HTK



| | mm | kW | kW | kW | mm | kW | | mm | | | | | | kg |
|---------|------|------|----|------|------|-----|--------------|------|------|------|------|------|------|-------|
| | | | | | | | | A | B | C | D | E | F | |
| HTK- 6 | 650 | 2 | 5 | 4.8 | 500 | 3.0 | JYG- B- 650 | 3150 | 1050 | 980 | 1800 | 1700 | 858 | 1450 |
| HTK- 8 | 800 | 3 | 9 | 7.5 | 650 | 4.0 | JYG- B- 800 | 3500 | 1220 | 1180 | 2000 | 1600 | 988 | 2100 |
| HTK- 10 | 1000 | 4.6 | 13 | 10.8 | 800 | 5.5 | JYG- B- 1000 | 3750 | 1380 | 1280 | 2100 | 1750 | 1196 | 2920 |
| HTK- 12 | 1200 | 5 | 18 | 15 | 1000 | 5.5 | JYG- B- 1200 | 4240 | 1660 | 1370 | 2530 | 2165 | 1418 | 3900 |
| HTK- 14 | 1400 | 6.5 | 25 | 18 | 1200 | 7.5 | JYG- B- 1400 | 4450 | 1750 | 1500 | 2800 | 2450 | 1520 | 5150 |
| HTK- 16 | 1600 | 8 | 32 | 27 | 1400 | 11 | JYG- B- 1600 | 4650 | 2000 | 1600 | 3150 | 2600 | 1755 | 5900 |
| HTK- 18 | 1800 | 9.5 | 45 | 36 | 1600 | 15 | JYG- B- 1800 | 4920 | 2180 | 1750 | 3450 | 2850 | 1950 | 8700 |
| HTK- 20 | 2000 | 10.6 | 50 | 42 | 1800 | 15 | JYG- B- 2000 | 5100 | 2360 | 1800 | 3620 | 3200 | 2150 | 11500 |

()

